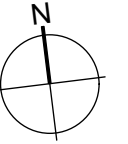
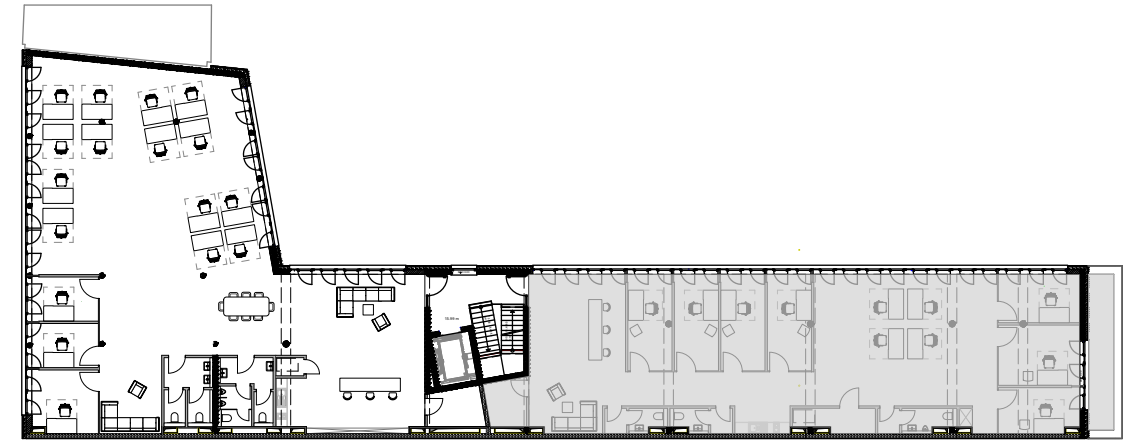
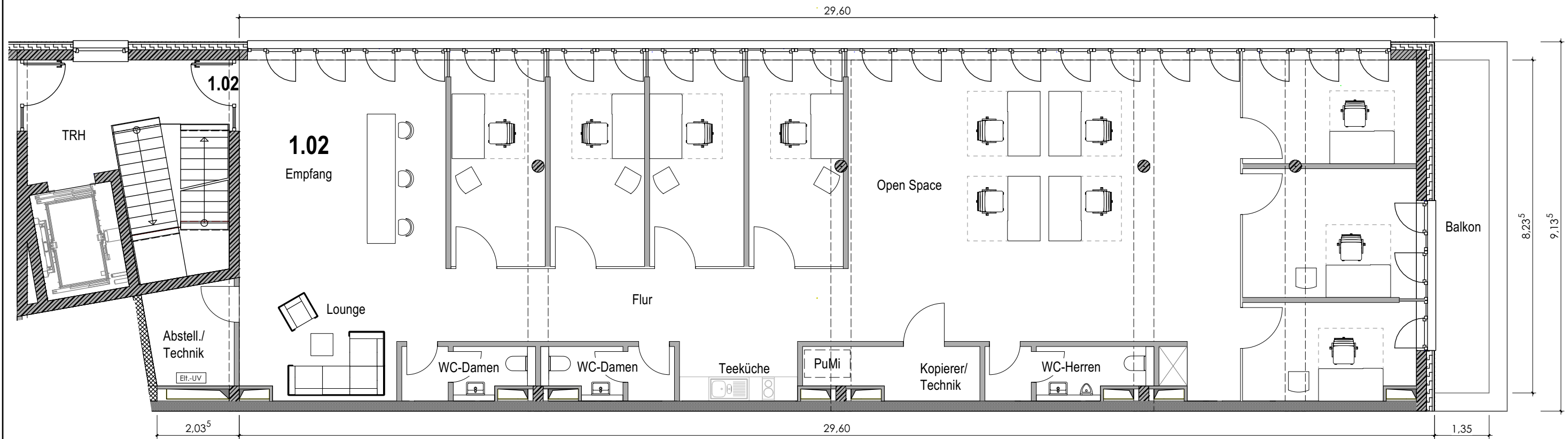



Lerchenstrasse



Übersichtsplan 1.OG



Bauvorhaben: Neubau Gewerbe Lerchenstrasse 16, 22767 Hamburg		Planverfasser: 
Planinhalt: Beispielgrundriss Nutzungseinheit 1.02 (1.OG)		
Planstand:	Datum/gez.: 13.10.2022/id	Maßstab: 1:100